

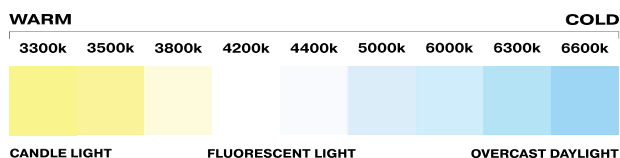


FLIGHT Stack

With awe-inspiring artistry, FLIGHT Stack redefines modern staircases. Each tread block flows into the next, creating a seamless waterfall effect that blends rise and run with stunning precision. As the first system of its kind, Stack conceals all metal hardware—leaving only the clean, continuous beauty of wood connecting one level to another. Purposefully engineered for open spaces, FLIGHT Stack makes a bold architectural statement in both contemporary homes and commercial environments.

Features:

- Waterfall glass effect
- All wood aesthetic with no visible metal
- All stringers, hardware, and components hidden
- LED Treads compatible with smart home integration

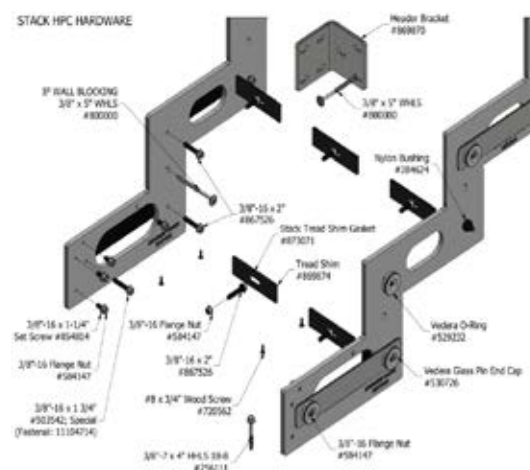
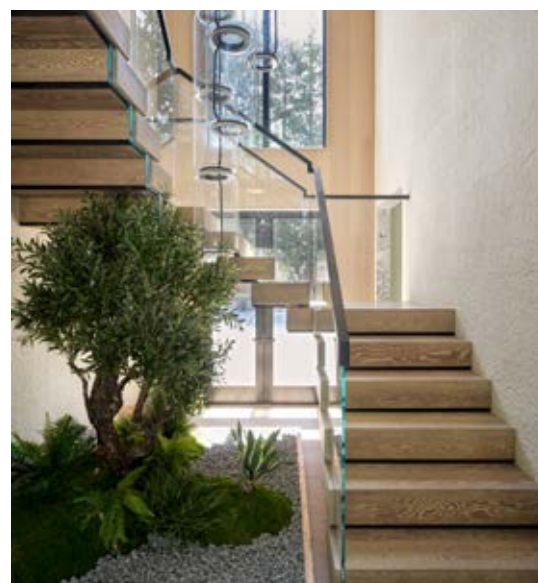


Requirements:

- Double LVL or triple 2X blocking minimum for all on-site install connections
- Landings and platforms will be provided by Viewrail
- Steel studs alone are not adequate for support

Specs:

- Vedera style glass only
- Commercial or Residential use
- Tread box construction with wood face grain
- Bracket and pan support system is powder coated matte black for additional jobsite protection



→ Learn More on our Website!

Stack Product Overview



Specifications

Configurations

Straight
U-Shape
Switchback
90° (L-Shape)

Stringer Support

1/2" Mild Steel Stringers
Stringer Bracket Connectors
Welded Steel Tread Supports

Railing Options

Exclusively Vedera Glass
1/2" Tempered with Cap Rail
9/16" Laminate with Stabilizers

Tread Types

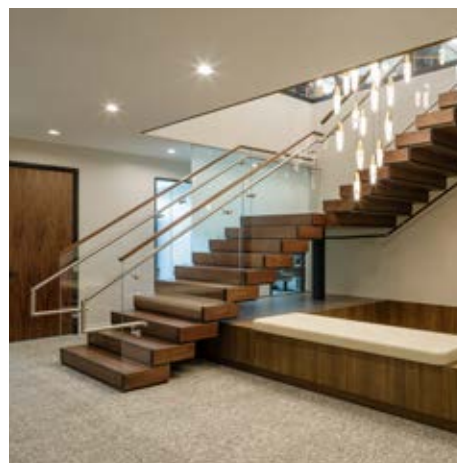
Exclusive 1" Stack Wrap
Other custom Tread Solutions

Upgrades

Grip Strips
LED Treads
LED Handrail

"Steel First" Solutions

Custom 1/2" Plywood Railing to
Confirm Glass Measurements



BIM Files For Architects!

