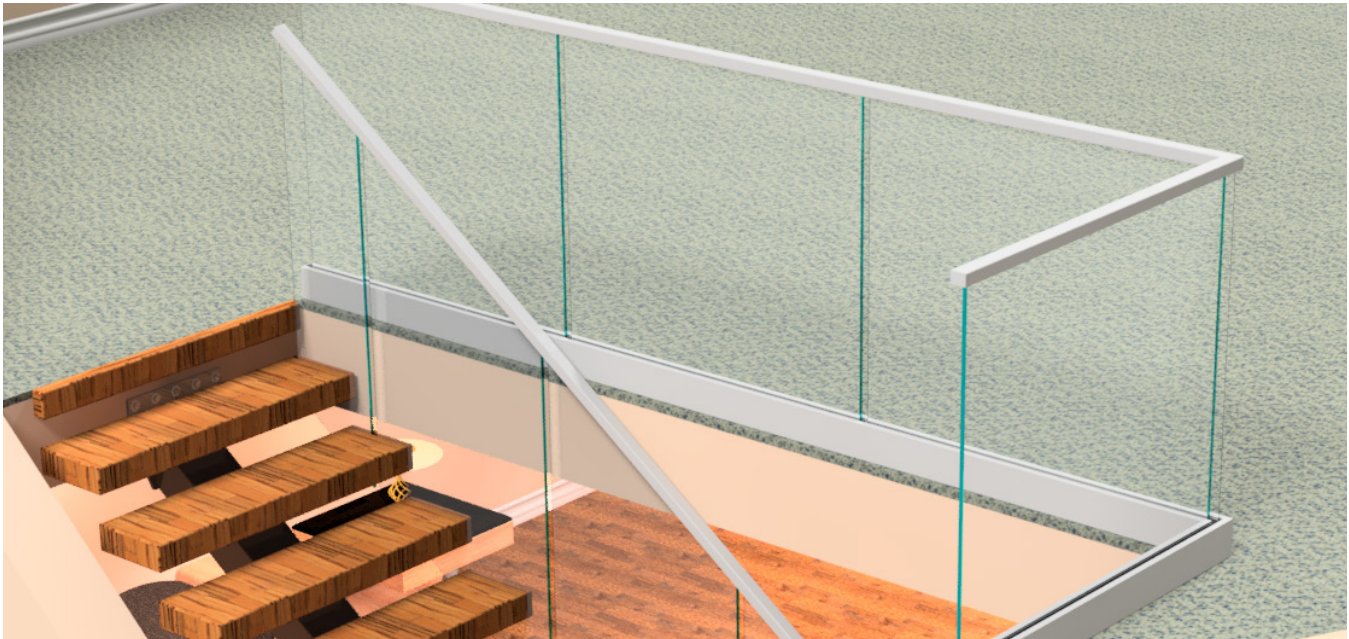




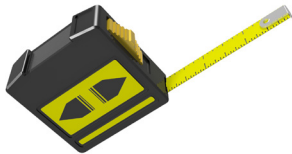
# Glass Top Cap Rail Installation Guide

Look for this sticker  
on hardware bags

HANDRAIL



## Tools Needed for this Installation



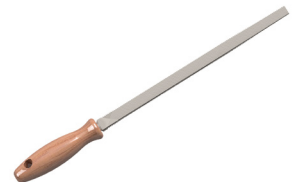
Tape Measure



Pencil



Table Saw



Metal File



Scissors



Glass Cleaner



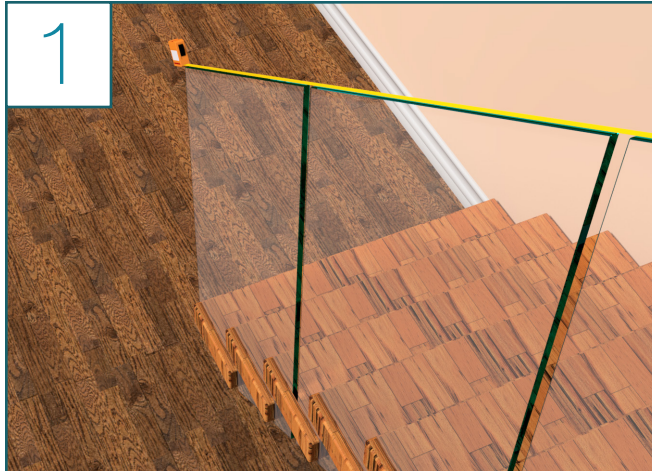
Epoxy

## Things to Know Before You Get Started

- Read through all provided materials before beginning installation.
- **For handrail installations including LEDs:**  
Plan your wire path from the power supply to the LED strips inside the handrail. This can be done externally or routed through handrail returns into the wall. This wire can be run externally along the handrail, or routed through handrail returns into the wall.

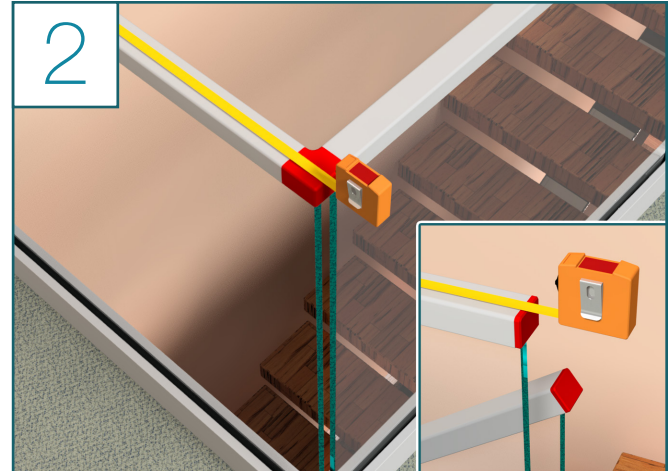


## Glass Top Cap Rail Installation Steps



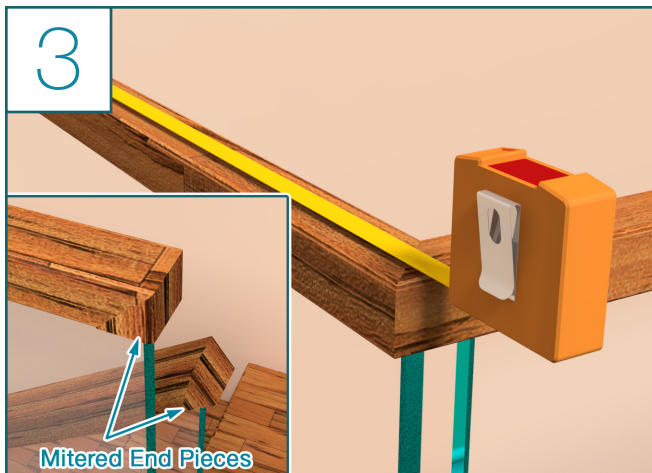
- Measure each run and select the Glass Top Cap Rail relevant to the run you are working on
- Start measuring and marking your pieces of cap to the correct lengths

*Tip: If you are unsure of which piece goes where, work from the largest run to the smallest run and lay your pieces out until you have all of your runs covered*



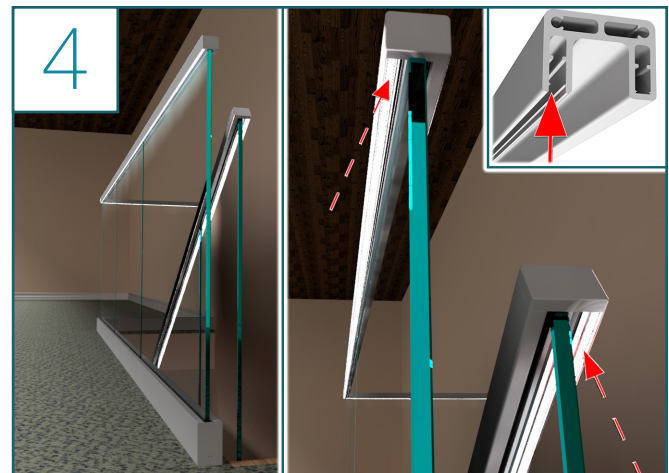
### Aluminum - Joints, Corners and End Pieces

- When measuring corners, make sure you are accounting for End Caps and any Couplers you will be using



### Wood Rail - Joints, Corners and End Pieces

- When measuring corners, make sure you are accounting for and cutting for a 90 degree miter
- When measuring end pieces, it may be useful to cut and glue on a mitered piece to cover the end (see image above)

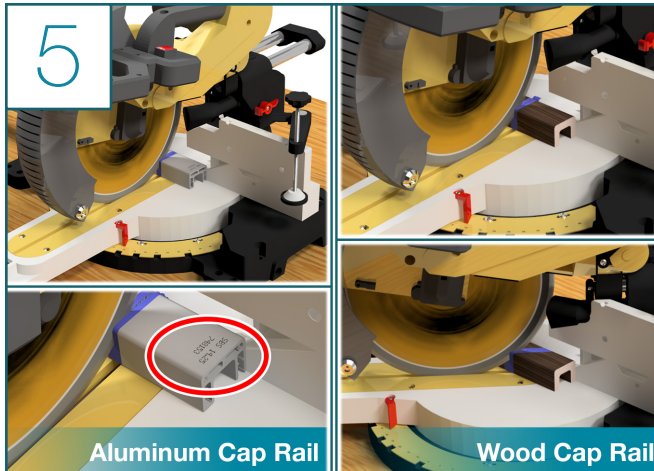


### SPECIAL NOTE FOR TOP CAP INSTALLATIONS WITH LEDS

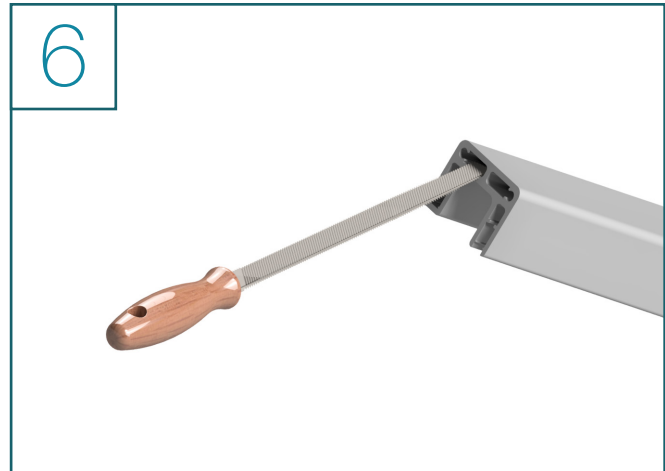
- Before cutting the Top Cap, confirm you have positioned them so that the LED channel is facing the side of the glass you want the light to shine upon



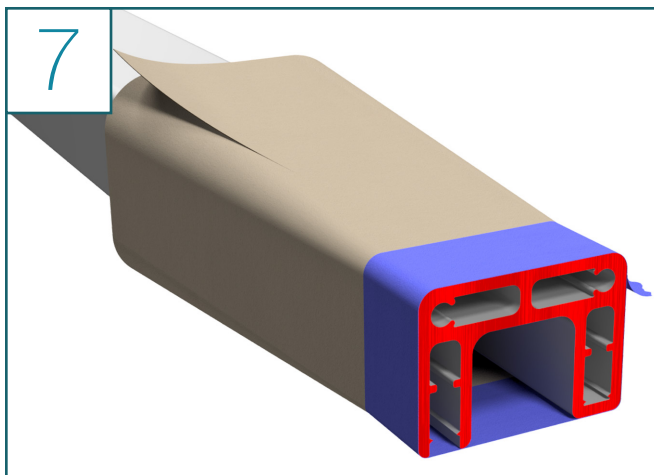
## Glass Top Cap Rail Installation Steps (Continued)



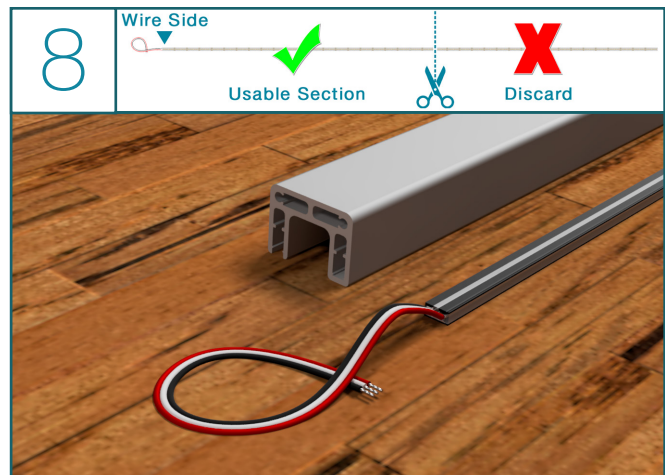
- Use the appropriate blade for cutting the Aluminum or Wood Top Cap Rail, and cut at your mark



- If your rail is made of metal, deburr the cut ends before installing adapters and couplers (wood rail will not have couplers or adapters)
- To deburr metal handrail, use a metal file to smooth the rough edges
- Thoroughly clean any loose metal shavings from the cut surface



- Mask off the powder coated finish near the newly cut portion of the handrail
- If provided with your order, apply Zinc Phosphate Primer and allow to dry (Coastal Applications Only)
- Using the supplied touch up paint, coat the exposed metal end - more than one coat may be needed

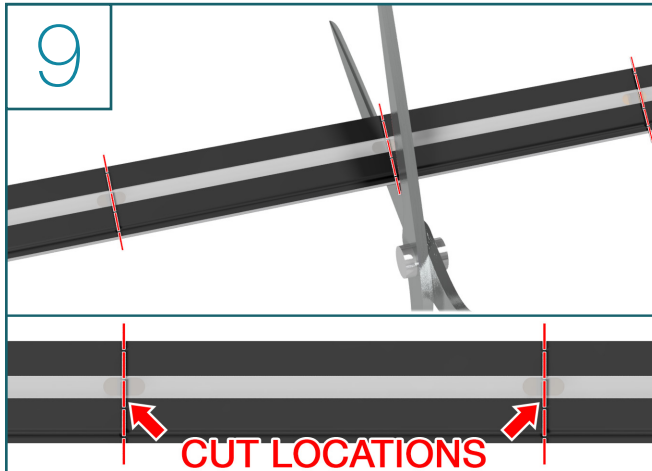


### THIS STEP IS ONLY FOR TOP CAP INSTALLATIONS *WITH* LEDS

- Use your previous measurements to lay out the LED strips to match each handrail section
- Using your prior measurements, mark the LED strip from the wire end to the needed length
- Discard any excess LED strip after cutting

*Note: If using couplers (see **PAGE 6**), combine lengths of connected handrail sections. Leave extra for corners—you can trim the excess later.*

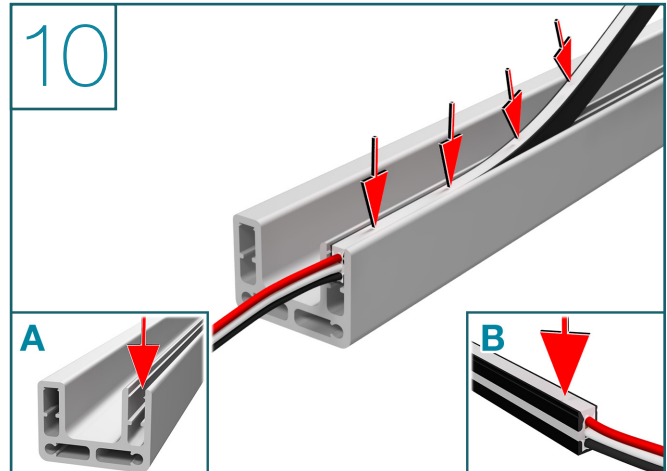
## Glass Top Cap Rail Installation Steps (Continued)



### THIS STEP IS ONLY FOR TOP CAP INSTALLATIONS WITH LEDS

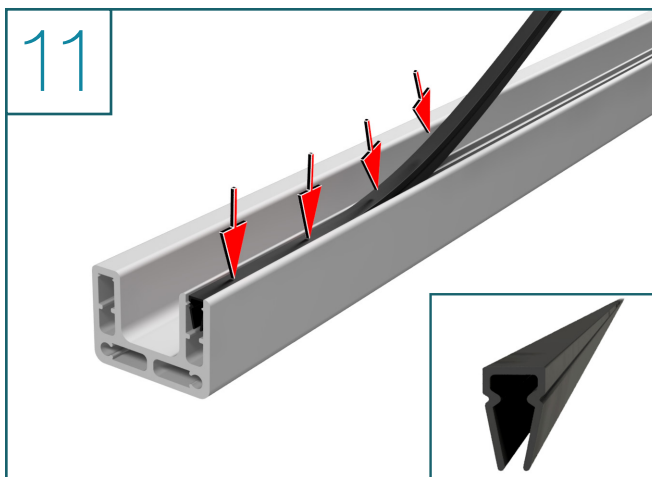
- Cut your LED Strip to the nearest cut point for the length of handrail that you have cut
- The cut locations are indicated by a slight discoloration in the narrow white strip on the side

*Note: If a measurement from steps 1–3 falls between cut points, round down to the next available cut mark.*



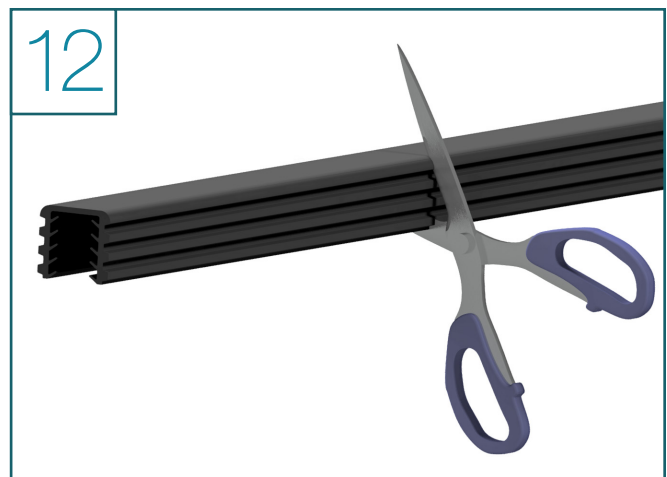
### THIS STEP IS ONLY FOR TOP CAP INSTALLATIONS WITH LEDS

- After your LED Strips have been cut to length, gently push them down into the channel (A) with the narrow white side of the strip (B) pointing out



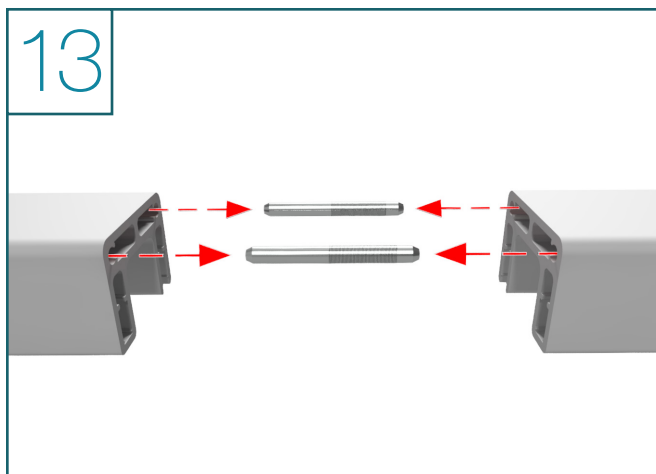
### THIS STEP IS ONLY FOR TOP CAP INSTALLATIONS WITHOUT LEDS

- Utilizing the measurements taken in **STEPS 1-3**, measure and cut the Glass Top Cap Plastic Cover to the correct sizes
- Snap the covers into the empty LED channels on the underside of the rails

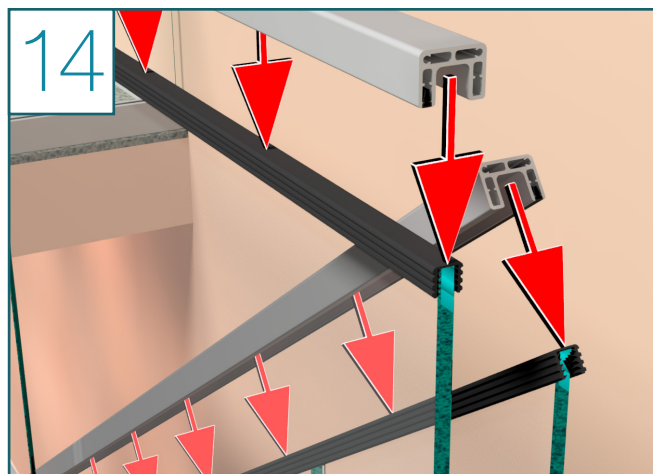


- Working at one section at a time, unroll the rubber U-channel and cut to length before placing it on top of the glass panels

## Glass Top Cap Rail Installation Steps (Continued)



- If you are joining two pieces of cap together with couplers it is easier to connect the pieces together first, and then install the cap rail on the glass - Once mounted on the U-channel, the cap rail is difficult to slide horizontally
- Refer to the images on **PAGE 6** to identify how each fitting functions



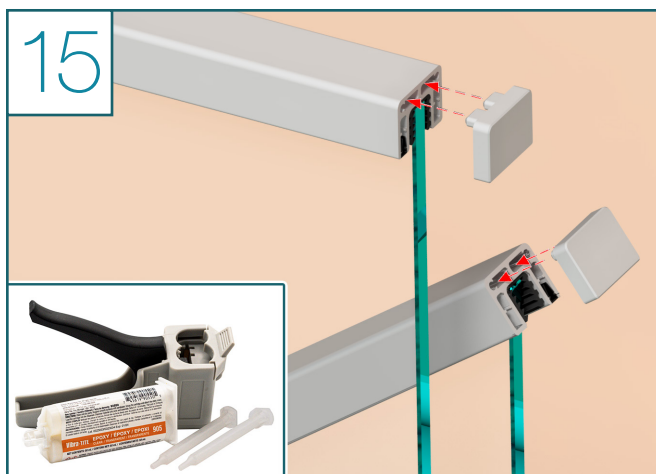
- Begin installing the top cap by pressing down one end and working your way along its length, rather than attempting to push it down all at once



### **Important Note for Top Cap Installations with LEDs**

*Make sure the railing is oriented so the LED channel is on the preferred side of the glass.*

*Tip: If you have a metal cap, you can use Windex to lubricate the channel for an easier fit*



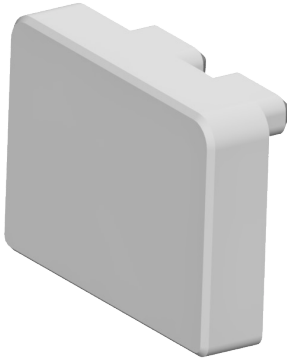
- Once the cap rail is installed along all runs, proceed to attach End Caps with the provided Epoxy

## Congratulations! You're done with this section.

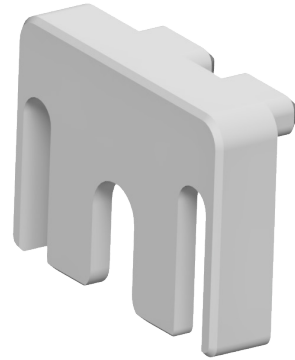
We'd love to see your work! Snap a few pics with your phone *and send them to [pictures@viewrail.com](mailto:pictures@viewrail.com).*

*Thanks for choosing Viewrail. Enjoy your new installation!*

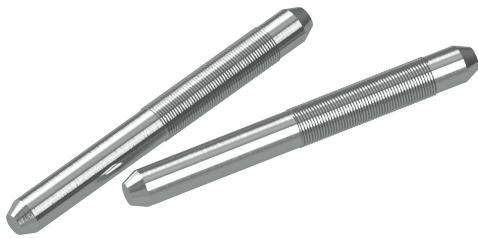
## Glass Top Cap Rail: Couplers & End Caps



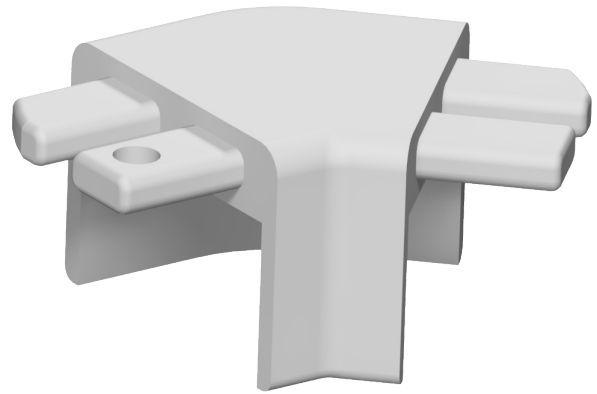
End Cap



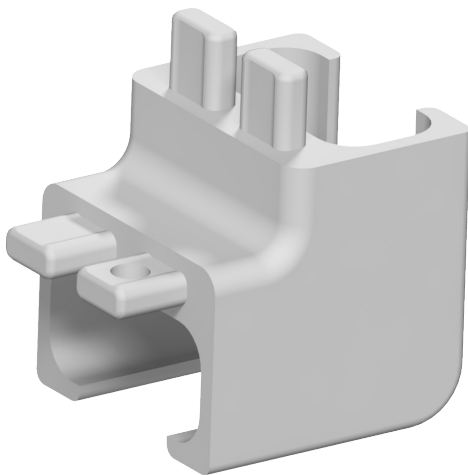
Wall Mounted End Cap



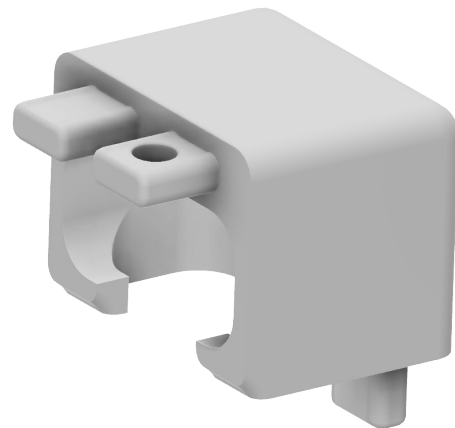
Straight Coupler



90° & 135° Corner Couplers  
*(Custom Angles Available)*



90° Up Coupler  
*(Custom Angles Available)*



90° Down Coupler  
*(Custom Angles Available)*