



FLIGHT MONO SPEC SHEET

2025

Product Specifications, Connections, Parts, and Drawings
Published March 13, 2025
Version 1.2

FLIGHT Mono

Leave every visitor speechless.



Specifications

Configurations

Straight
U-Shape
Switchback
90° (L-Shape)

Stringer Support

6"x8" or 8"x10"
Mild Steel or 304 Stainless

Railing Options

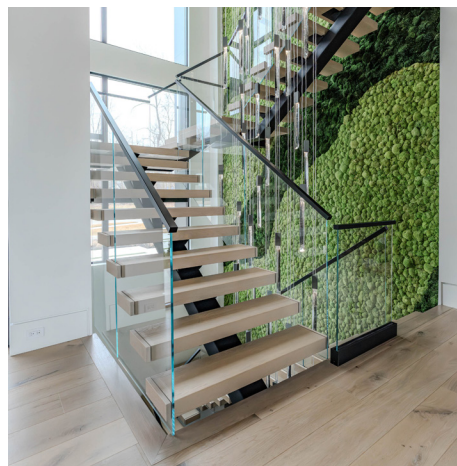
Glass
Cable
Onyx Rods
Stainless Rods
Endurance Rods (Exterior)

Tread Types

Signature
Endurance (Exterior)
Porcelain Pan (Interior/ Exterior)

Upgrades

Grip Strips
LED Treads
LED Handrail
Glass Risers
Fine Point Connections



First-Ever ICC Certified Floating Stair System!



- Get permits faster
- Pass inspections earlier
- Build with confidence

**BIM Files
For
Architects!**



Steel Specifications

Wire Diagram Drawings

Steel serves as the robust foundation of the mono stringer system, furnishing the essential strength required to uphold even the most sizable structures. When paired with a powder coat finish tailored to your preferences, it seamlessly integrates with the aesthetic of your home, exuding elegance and simplicity.

FIGURE 1A: TYPICAL CONSTRUCTION DRAWING - ANGLE TREAD STRINGER

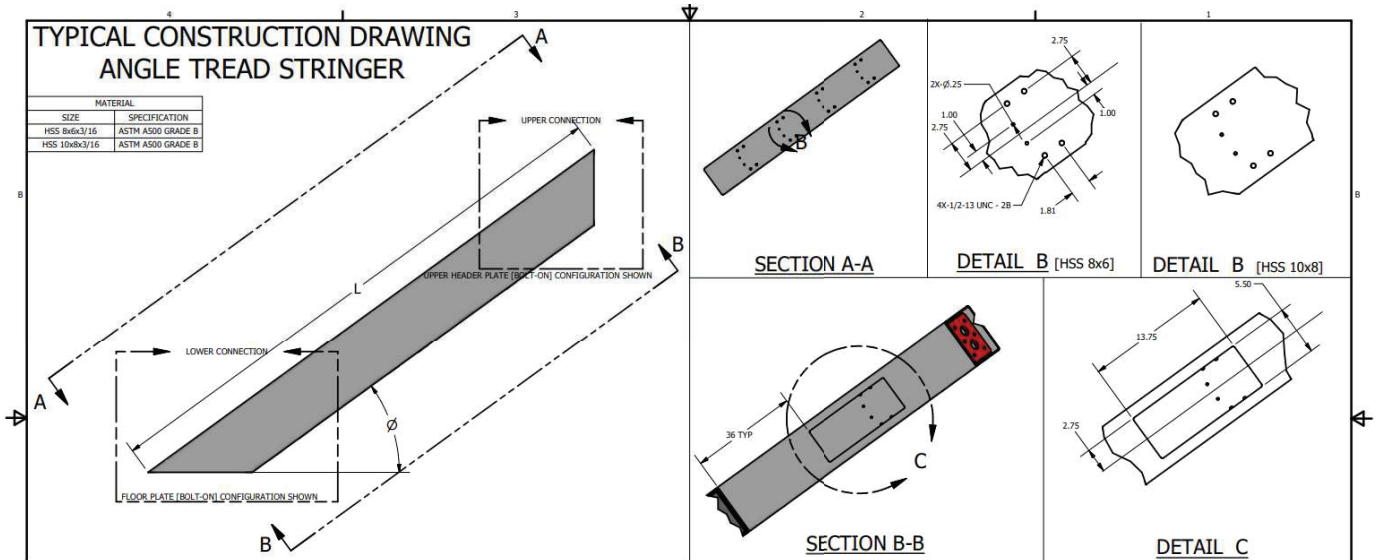


FIGURE 1B: TYPICAL LOWER CONNECTION CONFIGURATIONS - ANGLE TREAD STRINGER

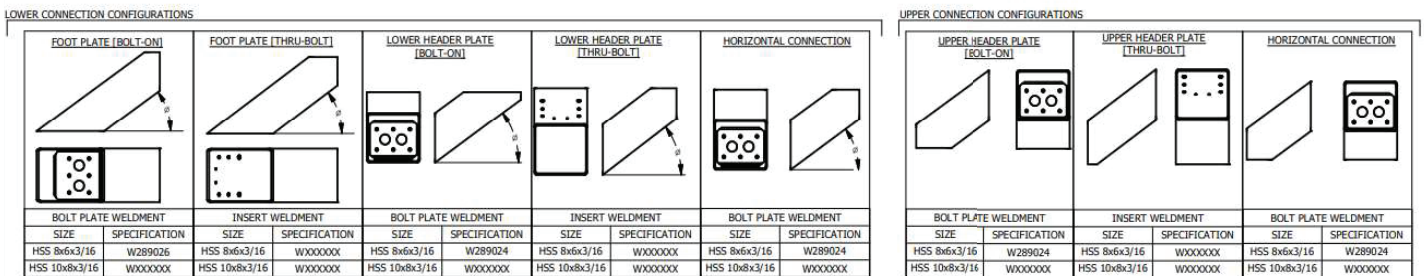


FIG 2: BOLT PLATE/BOLT PLATE WELDMENT (HSS 8x6x3/16)

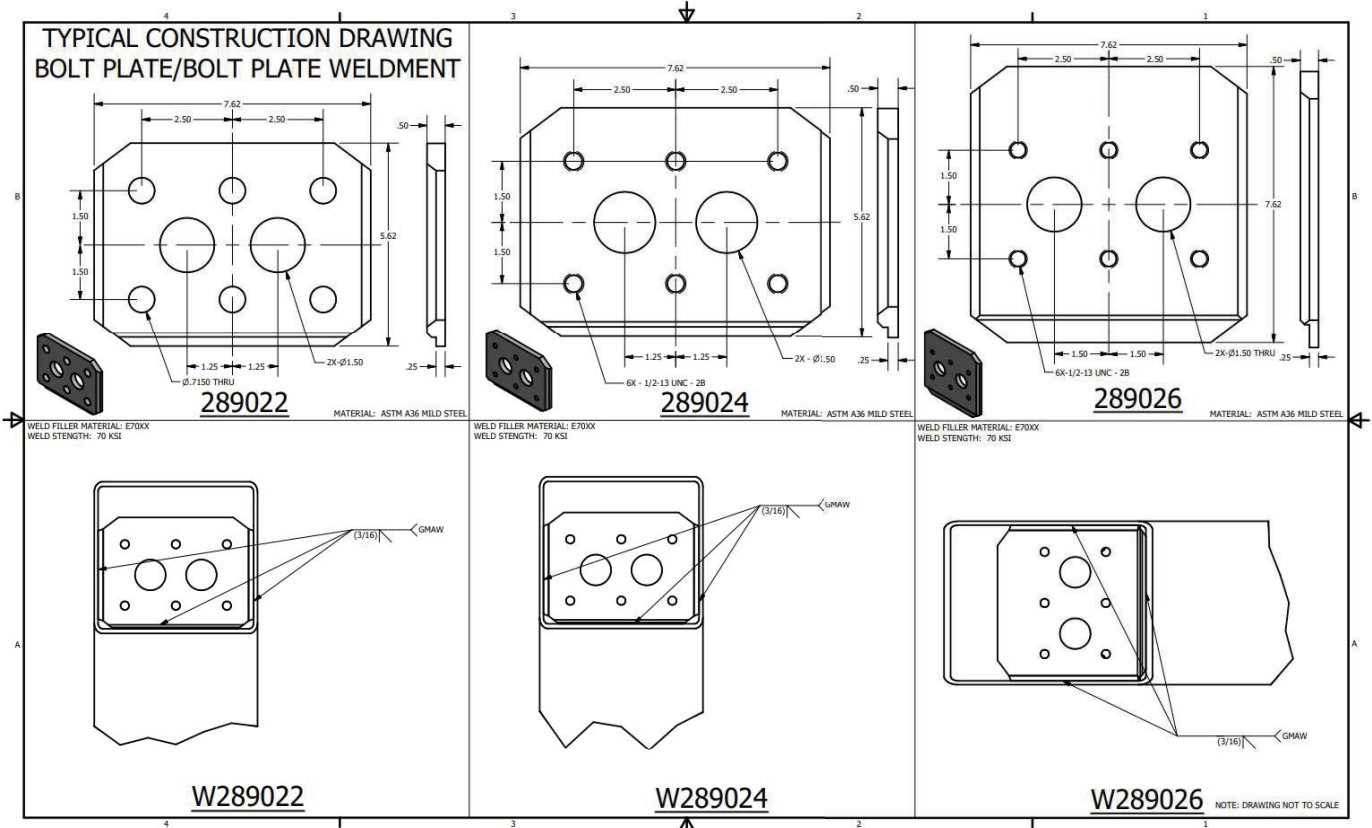


FIG 3: FOOT PLATES (HSS 8x6x3/16)

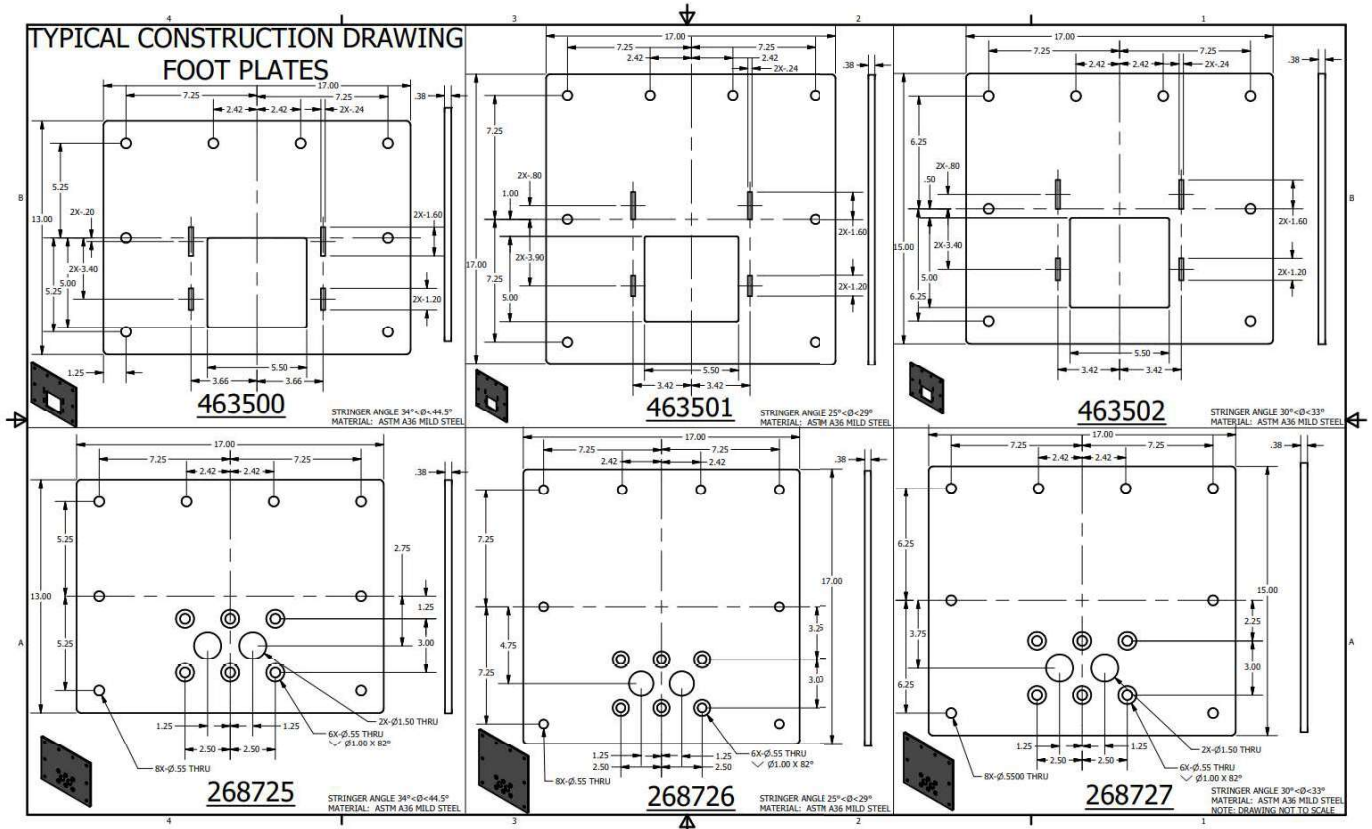


FIG 4: UPPER AND LOWER HEADER PLATES (HSS 8x6x3/16)

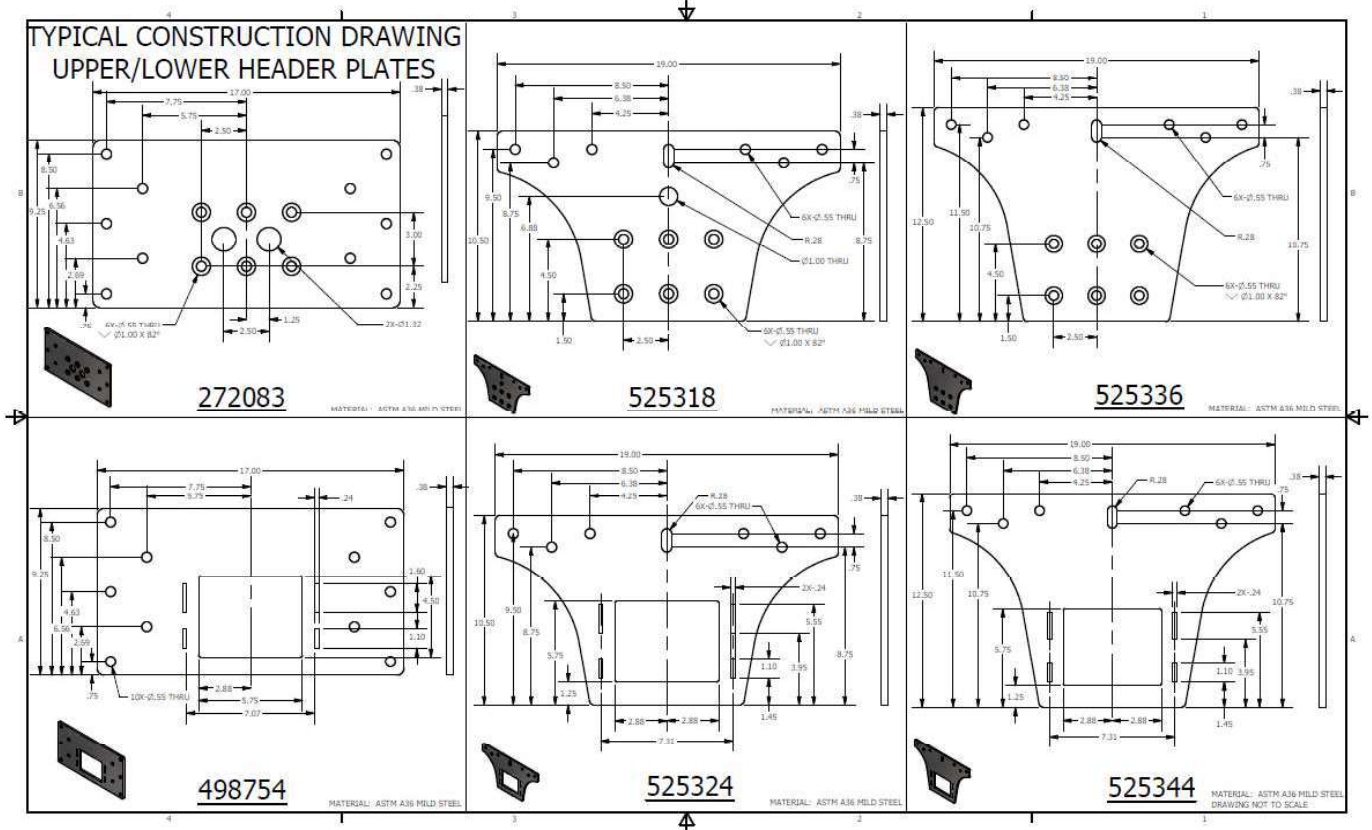
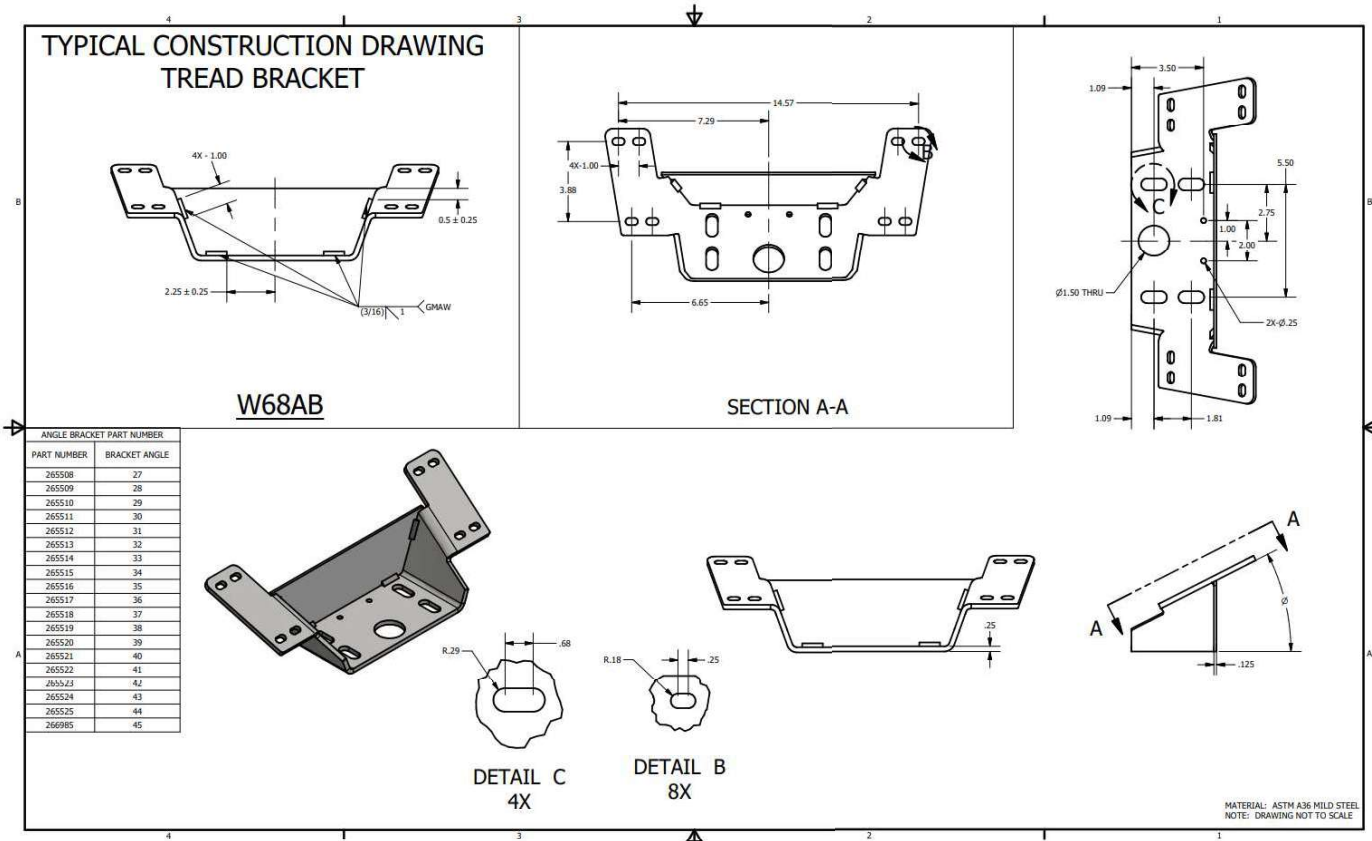


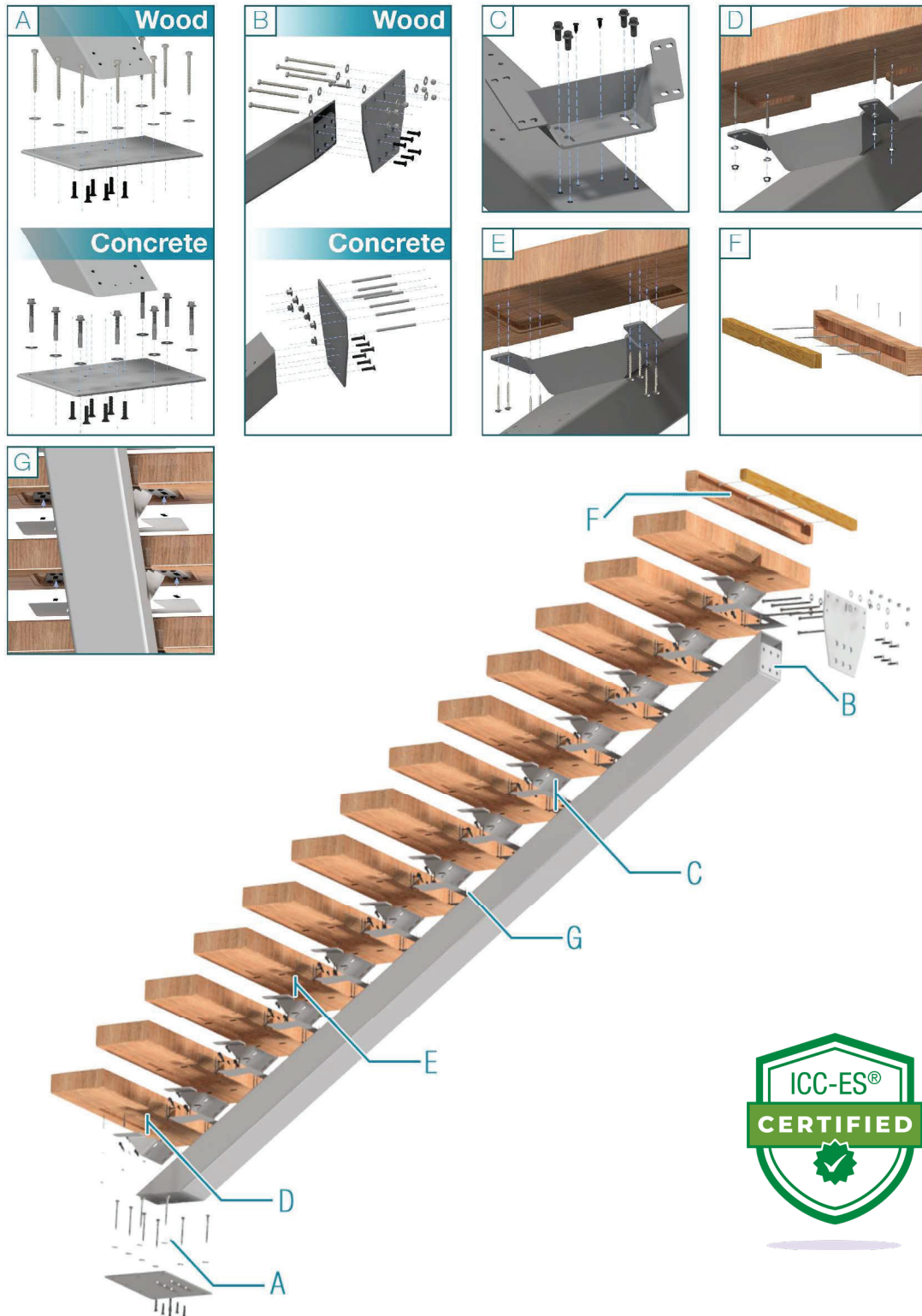
FIG 5: TREAD BRACKET (HSS 8x6x3/16)



FLIGHT Mono: Straight Floor to Wall

Exploded Connections Diagram || Pulled from ICC ESR-4797

FIG 7: TYPICAL CONNECTION CHART - BOLT-ON FLOOR-TO-WALL SYSTEM



FLIGHT Mono: Straight Wall to Wall

Exploded Connections Diagram || Pulled from ICC ESR-4797

FIG 8: TYPICAL CONNECTION CHART - BOLT-ON WALL-TO-WALL SYSTEM

